



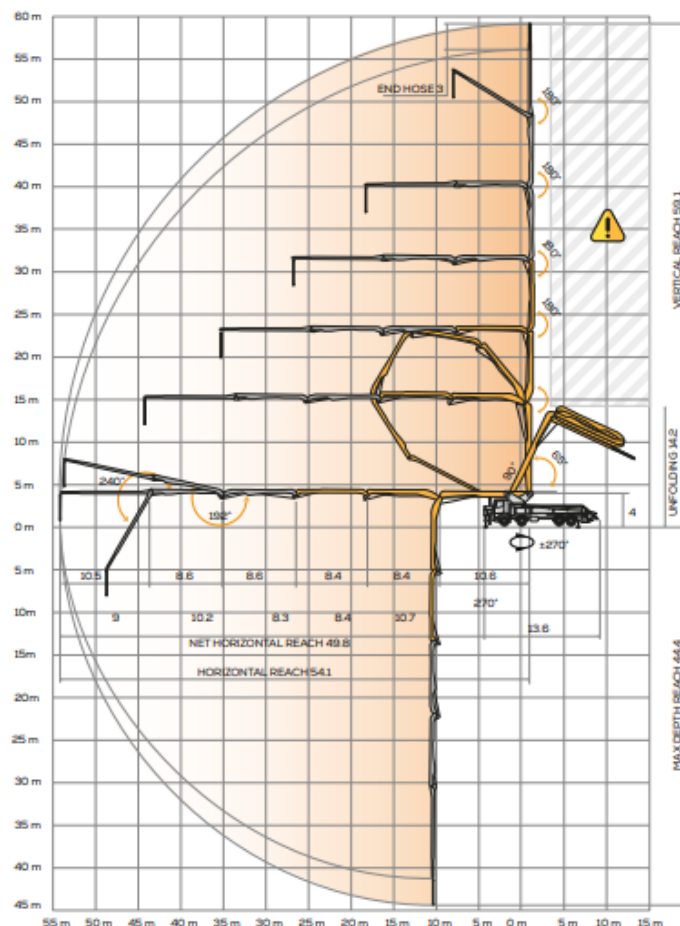
CIFA 60MB

60m 50m 180m³/hr

The CIFA 60MB is a versatile, powerful and highly adaptable piece of construction machinery:

- 'Smartronic' - collects & transmits data on the machine's status, and autonomously manages the pump unit with the pressure & speed of the motor to optimise performance.
- ASC (Automatic Stabilisation Control) maximises the area the boom can reach in order to cast concrete under safe conditions.
- 6-section boom, the last 3 in carbon fibre, reducing the weight to allow for greater stability in a plethora of combinations.
- ABB (anti boom bounce)

Working Range Visual:



Technical Details:

Delivery Cylinder	260mm
Delivery Stroke	2100mm
Output	Max 180m ³ /h
Delivery pressure	83 Bar
Strokes per minute	30
Weight	47000Kg
Pressure connection	5 inch
Vertical reach	60m
Horizontal reach	50m
Front outrigger loading	360kN
Rear outrigger loading	335kN
Boom unfold height	14200mm
Length	13400mm approx.
Width	4000mm + wing mirrors
Width with outriggers set up	Various due to ASC
Width short rig one side	Various due to ASC