

Schwing 51mb

 50m  44m  162m³/hr

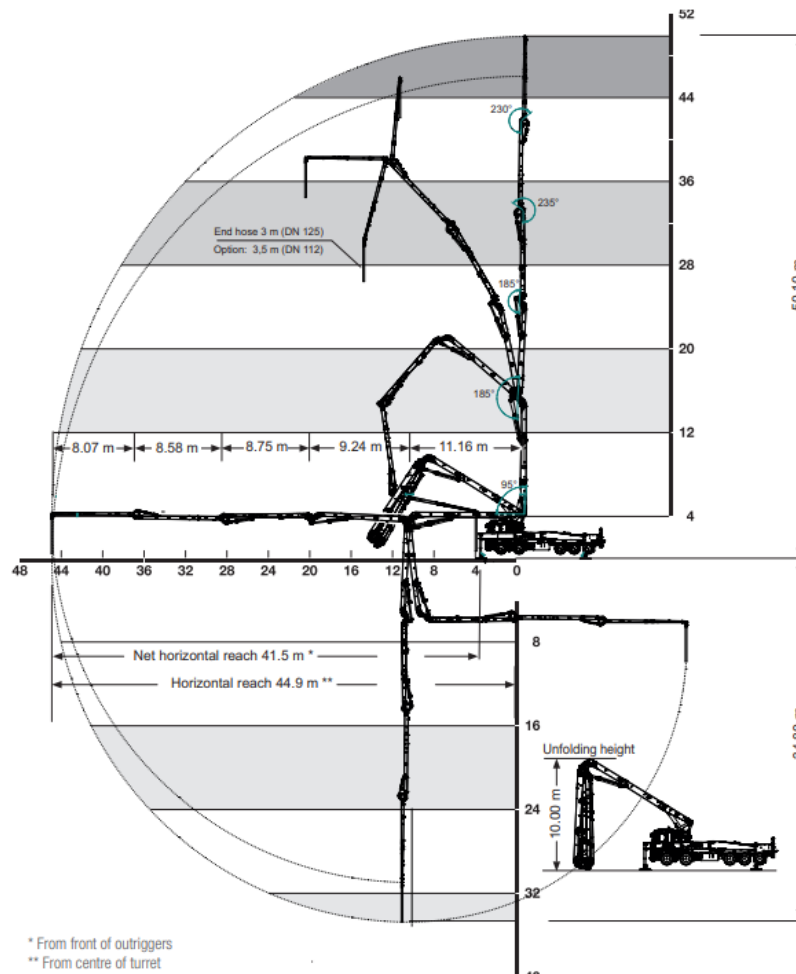
The Schwing S51 SX weighs in at just under 40 tonne which makes this a very lightweight pump within the larger series.

Built with the new Dynarig support system, the pump is super flexible in terms of set-up, being seriously advantageous for cramped construction sites.

All 4 outriggers can be positioned as per the spacing conditions on site, with the smart controller automatically calculating the resulting reach.

This flexibility, combined with the greener credentials of the lightweight truck, make this a versatile and dynamic boom pump.

Working Range Visual:



Technical Details:

Delivery Cylinder	250mm
Delivery Stroke	2500mm
Output	Max 162m ³ /h
Delivery pressure	85 Bar
Strokes per minute	32
Weight	40000 KG
Vertical reach	50.1m
Horizontal reach	44.9m
Front outrigger loading	245kN
Rear outrigger loading	240kN
Boom unfold height	10000mm
Length	13210mm approx.
Width	6350mm + wing mirrors
Width with front outriggers set up	8950mm
Width with rear outriggers set up	9300mm