

RAMCRETE



www.ramcrete.co.uk Tel: 01628 782860 Email: admin@ramcrete.co.uk



CIFA 35MB

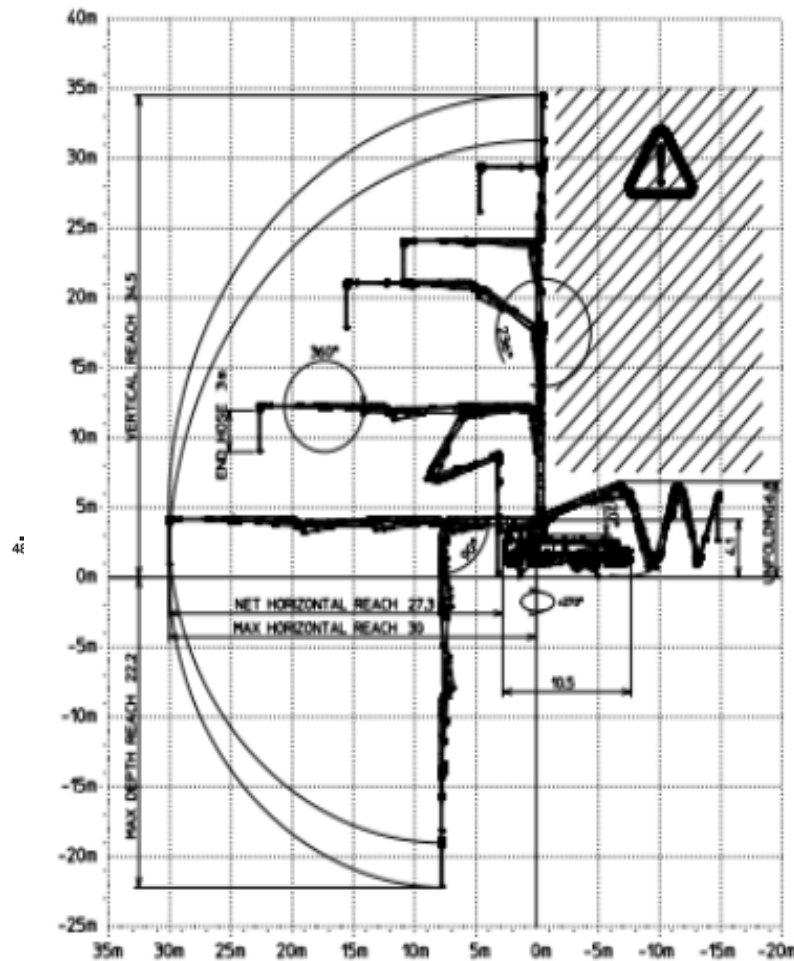
 35m  32m  160m³/hr

This super compact machine is mounted onto a six-wheel base truck for excellent manoeuvrability.

The CIFA 35mb is the ideal choice thanks to its Advanced Stability Control (ASC) which allows for an optimum short rigging system. Able to set-up pretty much anywhere this pump is great for on-the-road jobs, tight urban spaces or small worksites.

Additionally, the continuous rotation of the last segment of this 5 section boom gives it a significant manageability like no other, making it ideal for tunnels, flyovers and bridges

Working Range Visual:



Front Outrigger Loading 175KN

Rear Outrigger Loading 155kn

Technical Details:

Delivery Cylinder	230mm
Delivery Stroke	2100mm
Output	Max 160m ³ /h
Delivery pressure	53 Bar
Strokes per minute	100
Weight	26000 KG
Vertical reach	34.4m
Horizontal reach	30.1m
Front outrigger loading	175kN
Rear outrigger loading	155kN
Boom unfold height	6800mm
Length	10588mm approx.
Width	4000mm + wing mirrors
Rear outriggers fully extended	6.59m
Front outriggers fully extended	5.71m

[View this pump on our website](#)