



CIFA 35mb

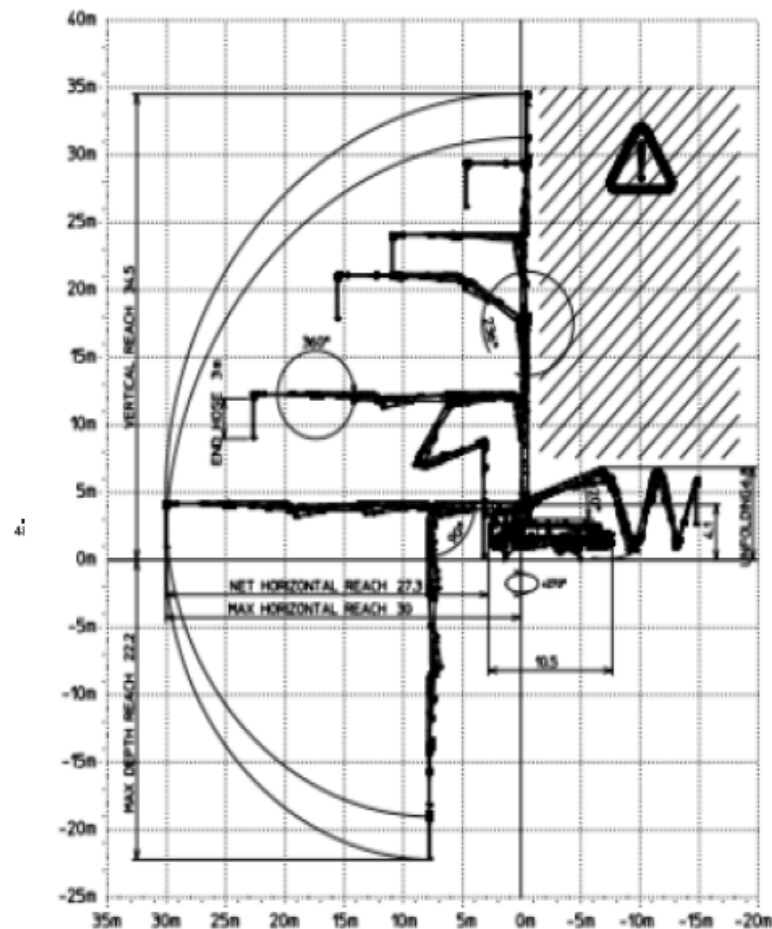
 35m  32m  160m³/hr

This super compact machine is mounted onto a six-wheel base truck for excellent manoeuvrability.

The CIFA 35mb is the ideal choice thanks to its Advanced Stability Control (ASC) which allows for an optimum short rigging system. Able to set-up pretty much anywhere this pump is great for on-the-road jobs, tight urban spaces or small worksites.

Additionally, the continuous rotation of the last segment of this 5 section boom gives it a significant manageability like no other, making it ideal for tunnels, flyovers and bridges

Working Range Visual:



Front Outrigger Loading 175KN

Rear Outrigger Loading 155kn

Technical Details:

Delivery Cylinder	230mm
Delivery Stroke	2100mm
Output	Max 160m ³ /h
Delivery pressure	53 Bar
Strokes per minute	100
Weight	26000Kg
Pressure connection	5"
Vertical reach	34.4
Horizontal reach	30.1m
Front outrigger loading	175kN
Rear outrigger loading	155kN
Boom unfold height	6800mm
Length	10588mm approx.
Width	4000mm + wing mirrors
Minimum Travel Height	4000mm
Width front outriggers fully extended	5710mm
Width rear outriggers fully extended	6590mm
Width front outriggers short rigged	Various due to ASC
Width rear outriggers short rigged	Various due to ASC