



BMS 22MB

 22m
  18m
  85m³/hr

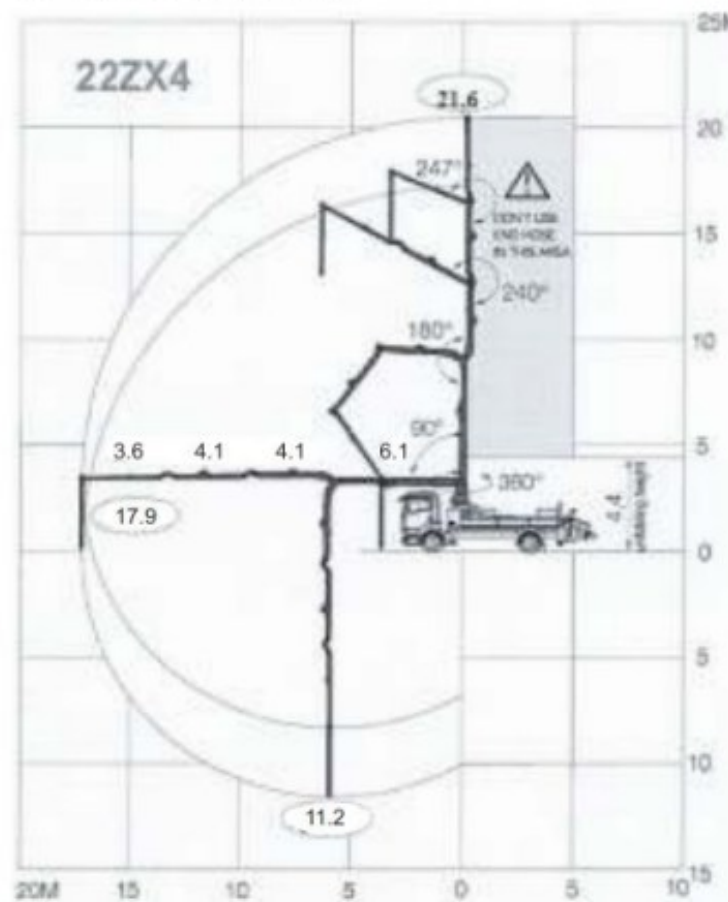
New to the fleet in 2023, the 22 meter boom is a great addition to the smaller mobile boom pumps here at Ramcrete.

The Free Flow Hydraulic system used in the BMS 22m boom means there is less noise and a decrease in the bouncing of the boom, which has made this compact concrete pump a popular choice to date.

With a similar output and set up space as the 20mb this is a more powerful choice.

Working Range Visual:

WORKING RANGE



Technical Details:

Delivery Cylinder	230mm
Delivery Stroke	1400mm
Output	Max 85m ³ /h
Delivery pressure	54 Bar
Strokes per minute	24
Weight	20000Kg
Pressure connection	5"
Vertical reach	22m
Horizontal reach	17.9
Front outrigger loading	150kN
Rear outrigger loading	90kN
Boom unfold height	3600mm
Length	5250mm approx.
Width	2750mm + wing mirrors
Minimum Travel Height	3600mm
Width front outriggers fully extended	4000mm
Width rear outriggers fully extended	2700mm
Width front outriggers short rigged	4000mm
Width rear outriggers short rigged	2700mm