

RAMCRETE



www.ramcrete.co.uk Tel: 01628 782860 Email: admin@ramcrete.co.uk

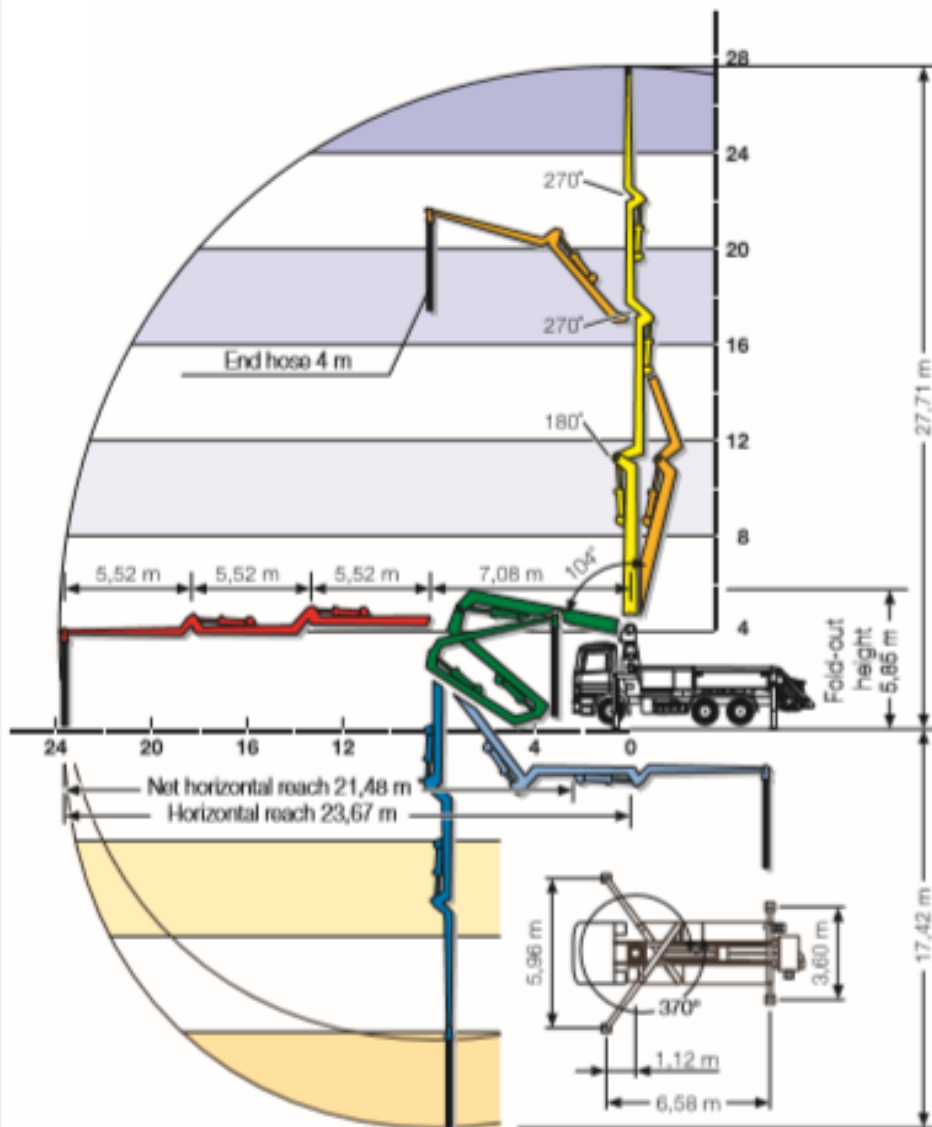


Schwing 28 MB

28m 24m 130m³/hr

With its compact size and great flexibility, Schwing's 28m Z-fold offers superb manoeuvrability in congested job sites. The short vehicle length without overhang and the small outrigger footprint provide easy setup in those tight areas.

Working Range Visual:



Technical Details:

Delivery Cylinder	230mm
Delivery Stroke	1400mm
Output	Max 130m ³ /h
Delivery pressure	130 Bar
Strokes per minute	21
Weight	26000Kg
Vertical reach	28m
Horizontal reach	24m
Front outrigger loading	160kN
Rear outrigger loading	105kN
Boom unfold height	6500mm
Length	9890mm approx.
Width	2800mm + wing mirrors
Width full rig front set up	6200mm
Width full rig rear set up	4000mm
Width short rig front one side	4300mm
(boom cannot operate over cab)	
Width short rig rear one side	3300mm Straight Down
(boom cannot operate over cab)	

View this pump on our website