



SCHWING 24MB

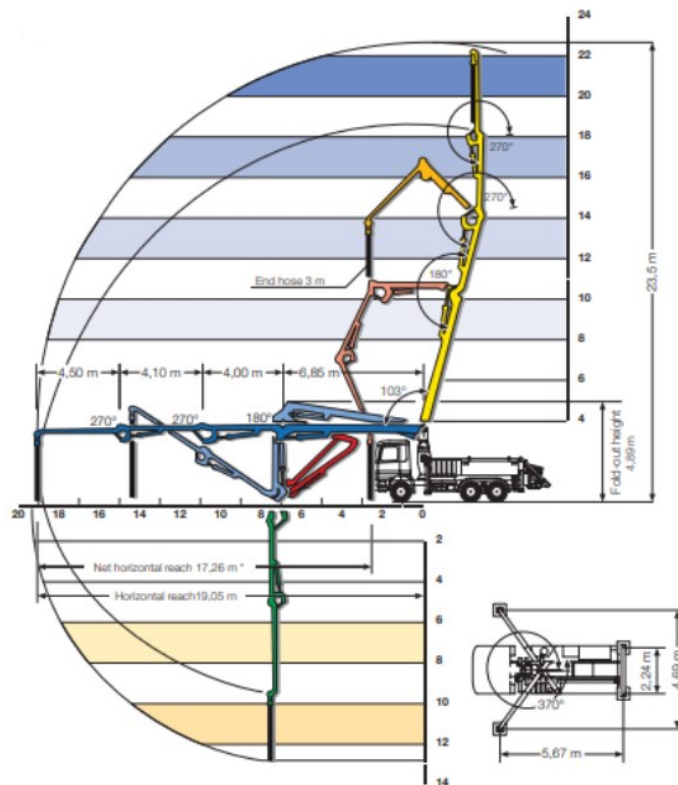
24m 21M 96m³/hr

Whether indoors or out on site, the Schwing 24 meter boom is unbeatable in the 24m class.

Its fold-out geometry gives it superb “under and through” snaking properties when working on 2nd, 3rd or higher floors.

Add to that the ability to unfold completely in less than 5m of headroom and its superiority quickly becomes clear.

Working Range Visual:



Technical Details:

Delivery Cylinder	200mm
Delivery Stroke	2000mm
Output	Max 96m ³ /h
Delivery pressure	126 Bar
Strokes per minute	23
Weight	26000Kg
Pressure connection	5"
Vertical reach	24m
Horizontal reach	20m
Front outrigger loading	140kn
Rear outrigger loading	90kN
Boom unfold height	3775mm
Length	3855mm approx.
Width	3800mm + wing mirrors
Minimum Travel Height	3775mm
Width with front outriggers fully extended	4700mm
Width with rear outriggers fully extended	3000mm straight down
Width short rig front one side (boom cannot operate over cab)	3700mm
Width short rig rear one side (boom cannot operate over cab)	3000mm Straight Down