



SCHWING 28MB

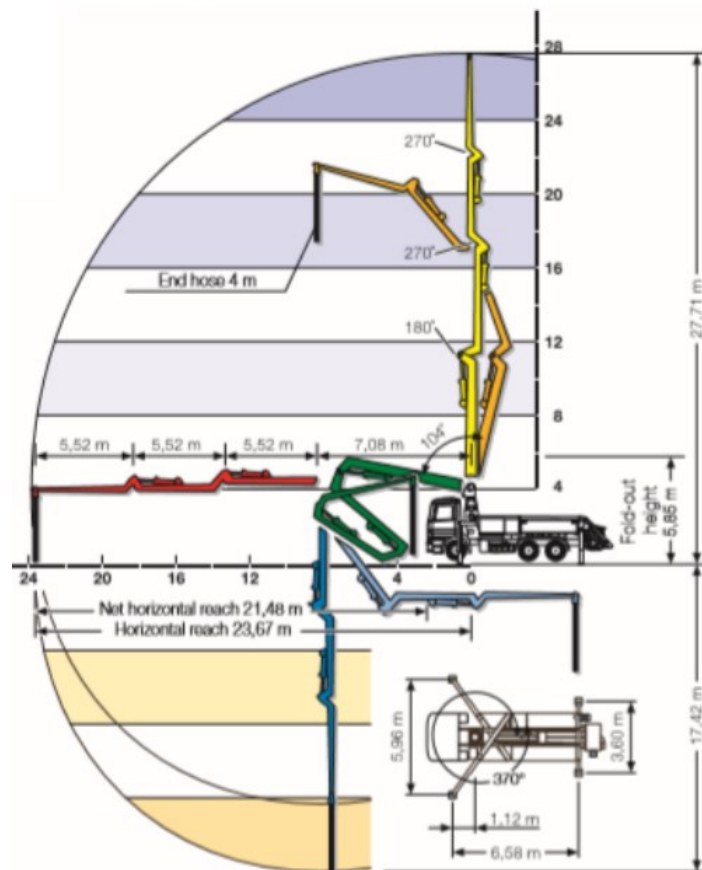
28m 25m 130m³/hr

With its compact size and great flexibility, Schwing's 28m Z-fold offers superb manoeuvrability.

Ideally suited for inside pours due to its discreet Z-fold, the 28mb Schwing allows its biggest reach in areas others cant reach.

Furthermore, it's short vehicle length (without any overhang) combined with the small outrigger footprint provide easy setup in those tight areas.

Working Range Visual:



Technical Details:

Delivery Cylinder	230mm
Delivery Stroke	1400mm
Output	Max 130m ³ /h
Delivery pressure	130 Bar
Strokes per minute	21
Weight	2600KG
Pressure connection	5"
Vertical reach	28m
Horizontal reach	24m
Front outrigger loading	160KN
Rear outrigger loading	105KN
Boom unfold height	5850mm
Length	9890mm approx.
Width	2800mm + wing mirrors
Minimum Travel Height	3790mm
Width front outriggers fully extended	6200mm
Width rear outriggers fully extended	4000mm
Width short rig front one side (boom cannot operate over cab)	4300mm
Width short rig rear one side (boom cannot operate over cab)	3300mm Straight Down