



Putzmeister 47MB

47m 41m 160m³/hr

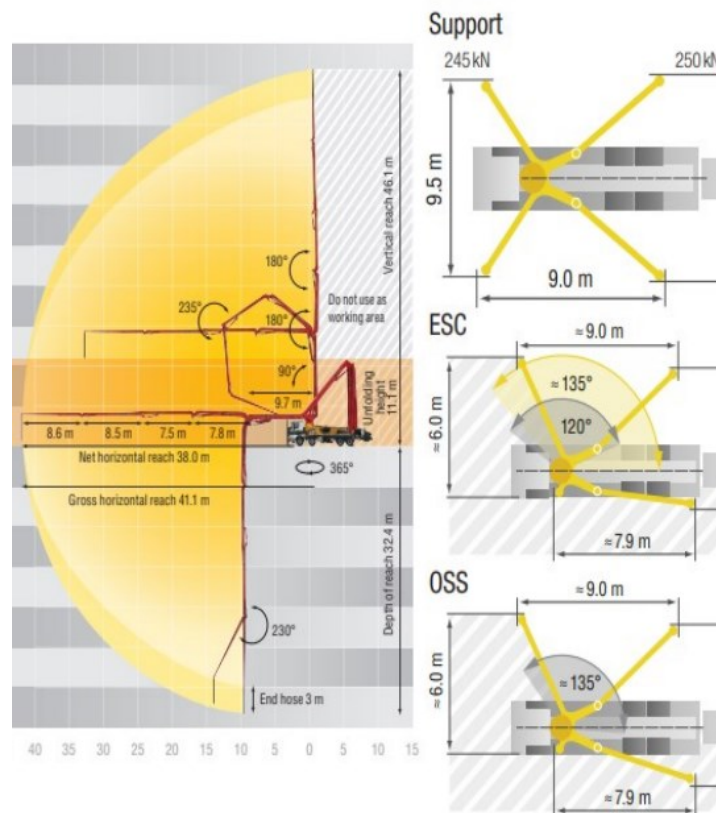
Enjoy long reach with smart design with the 47mb Putzmeister.

This five-section Z-Fold boom manoeuvres in, over and around obstacles for efficient concrete placement in difficult to reach places, setting it aside from others within this class.

Its super efficient manoeuvrability comes without sacrificing great vertical and horizontal reach making this such a great machine.

- Ergonic control system
- 5-section boom

Working Range Visual:



Technical Details:

Delivery Cylinder	250mm
Delivery Stroke	2100mm
Output	Max 160m ³ /h
Delivery pressure	130 Bar
Strokes per minute	31
Weight	37000Kg
Pressure connection	5"
Vertical reach	47m
Horizontal reach	41m
Front outrigger loading	245kN
Rear outrigger loading	245kN
Boom unfold height	9800mm
Length	11850mm approx.
Width	2800mm + wing mirrors
Minimum Travel Height	4000mm
Width front outriggers fully extended	8000mm
Width rear outriggers fully extended	8900mm
Front One Side Short Rigged	5600mm
Rear One Side Short Rigged	6700mm